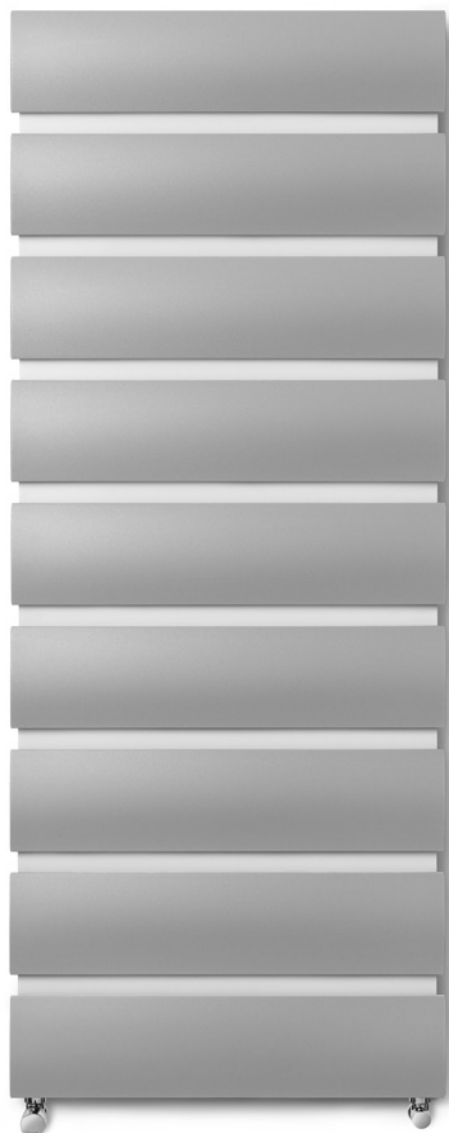
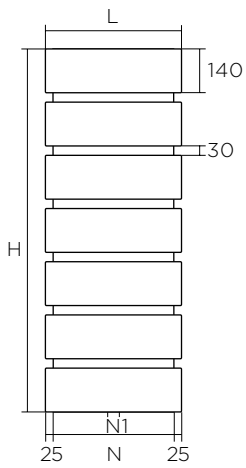

RUNTAL STECCA

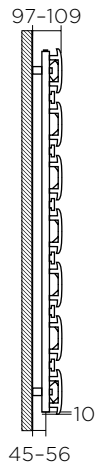


RUNTAL STECCA TECHNICAL SPECIFICATIONS

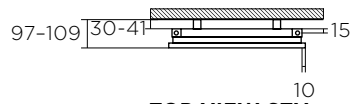
CENTRAL HEATING VERSION – HORIZONTAL MODEL



FRONT VIEW STV

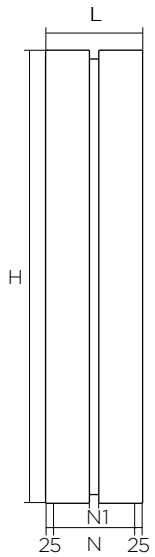


SIDE STV

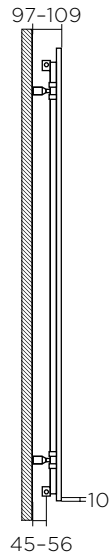


TOP VIEW STV

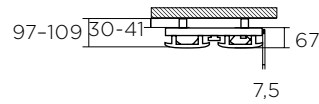
CENTRAL HEATING VERSION – VERTICAL MODEL



FRONT VIEW STH



SIDE STH



TOP VIEW STH

- H Height (mm)
- L Width (mm)
- N Pipe centres (mm)
- N1 Pipe centres (mm)

RUNTAL STECCA

CENTRAL HEATING VERSION – HORIZONTAL MODEL

Height 310 mm	Width mm	N mm	N1 mm	V dm ³	M kg	S _k %	q _{ms} kg/h	n	P ΔT 50K Watt
STV-031-100	1000	950	50	0.80	7.4	29	24	1.21	280
STV-031-120	1200	1150	50	0.88	8.7	29	28	1.21	328
STV-031-140	1400	1350	50	0.96	10.1	29	32	1.21	375
STV-031-150	1500	1450	50	1.00	10.8	29	34	1.21	398
STV-031-180	1800	1750	50	1.12	12.8	30	40	1.21	465
STV-031-200	2000	1950	50	1.20	14.2	30	44	1.20	510

Height 480 mm	Width mm	N mm	N1 mm	V dm ³	M kg	S _k %	q _{ms} kg/h	n	P ΔT 50K Watt
STV-048-100	1000	950	50	1.10	11.7	29	35	1.30	407
STV-048-120	1200	1150	50	1.20	13.9	30	41	1.21	476
STV-048-140	1400	1350	50	1.30	16.0	30	47	1.21	544
STV-048-150	1500	1450	50	1.35	17.1	30	50	1.22	577
STV-048-180	1800	1750	50	1.50	20.3	31	58	1.23	675
STV-048-200	2000	1950	50	1.60	22.5	31	64	1.24	740

Height 650 mm	Width mm	N mm	N1 mm	V dm ³	M kg	S _k %	q _{ms} kg/h	n	P ΔT 50K Watt
STV-065-100	1000	950	50	1.50	16.0	30	45	1.16	523
STV-065-120	1200	1150	50	1.64	18.9	31	53	1.17	612
STV-065-140	1400	1350	50	1.78	21.8	31	60	1.18	699
STV-065-150	1500	1450	50	1.85	23.3	31	64	1.19	741
STV-065-180	1800	1750	50	2.06	27.7	32	75	1.21	868
STV-065-200	2000	1950	50	2.20	30.7	32	82	1.23	950

Height 820 mm	Width mm	N mm	N1 mm	V dm ³	M kg	S _k %	q _{ms} kg/h	n	P ΔT 50K Watt
STV-082-045	450	400	50	1.20	9.7	31	26	1.14	304
STV-082-050	500	450	50	1.35	10.8	31	29	1.15	338
STV-082-060	600	550	50	1.60	12.9	30	35	1.17	405

Height 1160 mm	Width mm	N mm	N1 mm	V dm ³	M kg	S _k %	q _{ms} kg/h	n	P ΔT 50K Watt
STV-116-045	450	400	50	1.73	13.8	34	34	1.19	397
STV-116-050	500	450	50	1.90	15.3	33	38	1.20	441
STV-116-060	600	550	50	2.30	18.4	33	45	1.22	529

Height 1500 mm	Width mm	N mm	N1 mm	V dm ³	M kg	S _k %	q _{ms} kg/h	n	P ΔT 50K Watt
STV-150-045	450	400	50	2.00	17.9	36	41	1.23	477
STV-150-050	500	450	50	2.20	19.8	36	46	1.25	530
STV-150-060	600	550	50	2.60	23.8	36	55	1.27	636

N: pipe centres, N1: pipe centres, V: volume, M: weight, S_k: radiation, q_{ms}: water flow, n: exponent, P ΔT 50K: EN 442 output

Height 1840 mm	Width mm	N mm	N1 mm	V dm ³	M kg	S_k %	q_{ms} kg/h	n	P ΔT 50K Watt
STV-184-045	450	400	50	2.03	21.9	36	47	1.28	546
STV-184-050	500	450	50	2.25	24.3	36	52	1.29	607
STV-184-060	600	550	50	2.70	29.2	36	63	1.31	728

N: pipe centres, N1: pipe centres, V: volume, M: weight, S_k: radiation, q_{ms}: water flow, n: exponent, P ΔT 50K: EN 442 output

CENTRAL HEATING VERSION –VERTICAL MODEL

Height 450 mm	Width mm	N mm	N1 mm	V dm ³	M kg	S_k %	q_{ms} kg/h	n	P ΔT 50K Watt
STH-045-099	990	855	50	1.86	12.3	24	41	1.25	476
STH-045-116	1160	1025	50	2.17	14.3	24	48	1.26	556
STH-045-133	1130	1195	50	2.48	16.4	24	55	1.26	635
STH-045-150	1500	1365	50	2.79	18.4	24	61	1.26	715
STH-045-167	1670	1535	50	0.88	20.5	24	68	1.27	794
STH-045-184	1840	1705	50	0.96	22.5	24	75	1.27	874

Height 500 mm	Width mm	N mm	N1 mm	V dm ³	M kg	S_k %	q_{ms} kg/h	n	P ΔT 50K Watt
STH-050-099	990	855	50	1.98	13.5	25	44	1.25	513
STH-050-116	1160	1025	50	2.31	15.8	25	51	1.26	598
STH-050-133	1130	1195	50	2.64	18.0	25	59	1.26	684
STH-050-150	1500	1365	50	2.97	20.3	25	66	1.26	769
STH-050-167	1670	1535	50	3.30	22.6	25	74	1.27	855
STH-050-184	1840	1705	50	3.64	24.8	25	81	1.27	940

Height 600 mm	Width mm	N mm	N1 mm	V dm ³	M kg	S_k %	q_{ms} kg/h	n	P ΔT 50K Watt
STH-060-099	990	855	50	1.98	16.0	25	50	1.25	583
STH-060-116	1160	1025	50	2.31	18.8	25	58	1.26	680
STH-060-133	1130	1195	50	2.64	21.3	25	67	1.26	778
STH-060-150	1500	1365	50	2.97	24.0	25	75	1.26	875
STH-060-167	1670	1535	50	3.33	26.7	25	84	1.27	972
STH-060-184	1840	1705	50	3.63	29.37	25	92	1.27	1069

Height 1500 mm	Width mm	N mm	N1 mm	V dm ³	M kg	S_k %	q_{ms} kg/h	n	P ΔT 50K Watt
STH-150-031	310	175	50	0.96	11.7	30	33	1.24	389
STH-150-048	480	345	50	1.44	17.6	30	50	1.24	584
STH-150-065	650	515	50	1.92	23.4	30	67	1.25	778

N: pipe centres, N1: pipe centres, V: volume, M: weight, S_k: radiation, q_{ms}: water flow, n: exponent, P ΔT 50K: EN 442 output

Height 1800 mm	Width mm	N mm	N1 mm	V dm ³	M kg	S_k %	q_{ms} kg/h	n	P ΔT 50K Watt
STH-180-031	310	175	50	1.02	13.6	31	39	1.24	453
STH-180-048	480	345	50	1.53	20.5	31	58	1.24	679
STH-180-065	650	515	50	2.04	27.2	31	78	1.24	906

Height 2000 mm	Width mm	N mm	N1 mm	V dm ³	M kg	S_k %	q_{ms} kg/h	n	P ΔT 50K Watt
STH-200-031	310	175	50	1.06	14.9	31	43	1.25	496
STH-200-048	480	345	50	1.59	22.4	31	64	1.24	744
STH-200-065	650	515	50	2.12	29.8	31	85	1.25	992

N: pipe centres, N1: pipe centres, V: volume, M: weight, S_k: radiation, q_{ms}: water flow, n: exponent, P ΔT 50K: EN 442 output

FINISH

Powder-coated finish for basic radiator	Code	Extra charge on RAL 9016
White RAL9016 (standard)	0603	—
Classic and Trendy	See Runtal colour chart	15%
Metal Look	See Runtal colour chart	25%
White Quartz	0521	25%

DuPont™ Corian colours	Code	Additional price
Glacier White	0378	—
Strawberry Ice	0379	—
Blueberry Ice	0380	—
Sand	0381	—
Pearl Gray	0382	—
Vanilla	0383	—

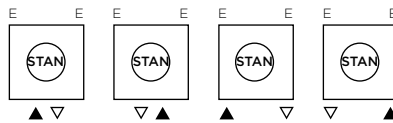
Decorative bars in DuPont™Corian® (as per RUNTAL STECCA leaflet)

Decorative bars are included in the price of the radiator. Please state separate codes for basic radiator and decorative bars when ordering.

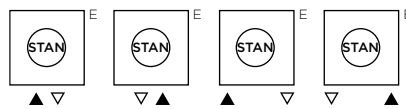
TECHNICAL DATA

Materials	Front modules made of sheet steel, decorative bars in DuPont™ Corian®, header 30 x 30 mm, round tubes Ø 12 mm and c-profiles made of steel
Operating pressure	Standard max. 4.0 bar (on request high pressure max. 10 bar, additional price + 15%)
Test pressure	Standard 5.2 bar
Operating temperature	Max. 120 °C
Standard kit	Wall brackets in same colour as radiator, and air vent included in packaging
Connections	With the standard connections 4 x ½" internal thread, the following connections are possible. ½" flow ▲/return ▼ on left or right, bottom vertical, 50 mm central or both sides, ½" air vent (E)

STV



STH



Min. water flow q_m min.	The price list datas shows the standard water flow q_{ms} for each model. The actual water flow q_m as a percentage of the standard water flow q_{ms} should normally be at least 27% for the RUNTAL STECCA.
Pressure loss Δp	Inlet and outlet resistance per radiator for water flow rates of up to 1 m/s $\zeta = 3.0$
Single-pipe systems	Not possible
Standards	CE, EN 442
Accessoires and Valves	As per ACCESSORIES price list

RUNTAL STECCA ACCESSORIES



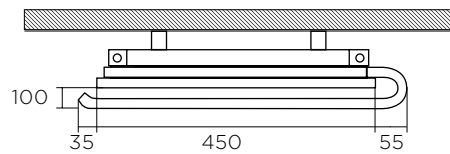
TOWEL BAR IN DUPONT™ CORIAN®

For retrofitting. The towels bar is reversible and can be fitted in the place of any decorative bar. More than one towel bar can be fitted per radiator. Use: RUNTAL STECCA STV (vertical models).

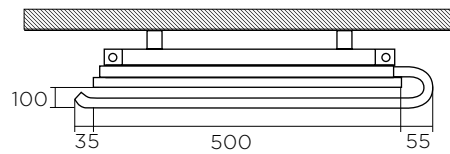
Art. no.	Width mm	Width mm	Code ⁽³⁾
481009	(1) 450 (2)	540	State when ordering
481019	500	590	State when ordering
481029	600	690	State when ordering

(1) Width of radiator, (2) Width of towel bar

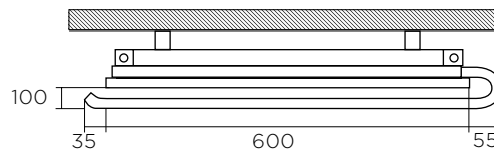
(3) Code depending on colour of decorative bars in DuPont™ Corian®, as stated in the section FINISH (DuPont™ Corian colours), to be indicated at order



TOP VIEW 481009

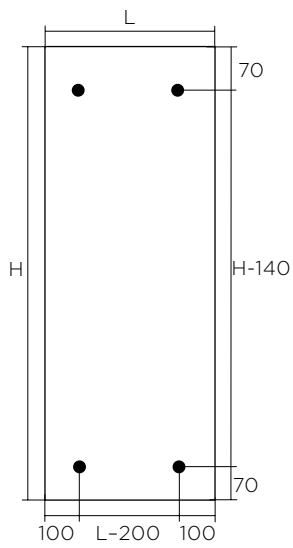


TOP VIEW 481019

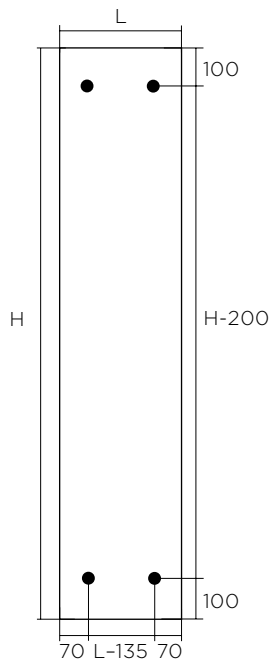


TOP VIEW 481029

RUNTAL STECCA MOUNTING INSTRUCTIONS



FRONT STV



FRONT STH

- H Height (mm)
- L Width (mm)
- Fixing point

For correct radiator installation, please note the corresponding installation instructions

ZEHNDER GROUP INTERNATIONAL SALES

Almweg 34, DE-77933 Lahr
T +49 7821 586-392, F +49 7821 586-406
International.sales@zehndergroup.com
www.runtal.com

A member company of the Zehnder Group.

