

---

# RUNTAL ARTEPLANO

RUNTAL DESIGN STUDIO



**runtal**

**RUNTAL ARTEPLANO.** Elegance, plain and simple. This designer radiator celebrates the perfection of material and surface finish, combining state-of-the-art heating technology with striking contemporary design. RUNTAL ARTEPLANO was developed in the Runtal Design Studio. The smooth surfaces efficiently give out a pleasing warmth while subtly integrating the radiator into the room. Alternatively, it can be transformed into a feature in its own right with the wide selection of materials and finishes. The only limit is your imagination. RUNTAL ARTEPLANO. A radiator becomes a work of art.















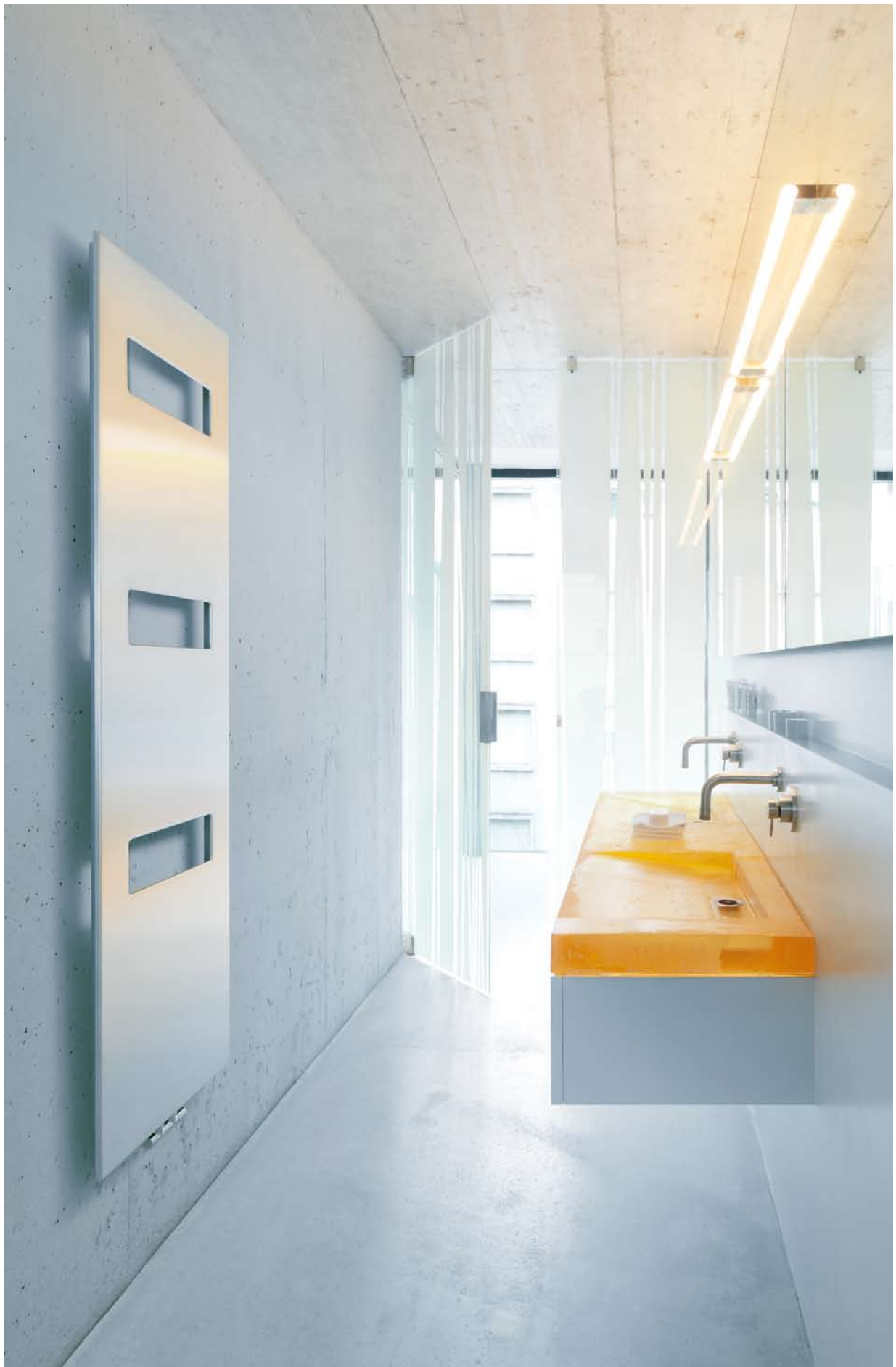








**RUNTAL ARTEPLANO SATIN** RUNTAL DESIGN STUDIO





**RUNTAL ARTEPLANO ONDA** RUNTAL DESIGN STUDIO





## RUNTAL ARTEPLANO RUNTAL DESIGN STUDIO

Runtal has been combining engineering expertise with architectural flair since 1953. The tradition of technical innovation and functional design is actively nurtured and developed by the Runtal Design Studio (RDS).

RDS holds in trust the creative heritage of the company's founders, Egon Runte and Jürg Altherr, defines the modern language of form of the Runtal brand, and is responsible for all design developments. It also collaborates with renowned international designers, commissioning feasibility studies and designs for new heating products. In addition, it examines technical and design proposals to evaluate their practicality, market potential and suitability for the brand.

By developing new materials and finishes, RDS creates innovative and practical solutions that enable sustainable use of energy and water. This is what gives innovative Runtal radiators their unique language of form.

This creative process produces simple, refined and efficient designs that employ the very best craftsmanship and materials. Swiss design, which first came to international prominence in the 1950s, is currently experiencing a renaissance, and is rightly considered a classic tradition.



# RUNTAL ARTEPLANO SURFACE FINISHES

## RUNTAL ARTEPLANO (Actual finishes may vary slightly from those shown)



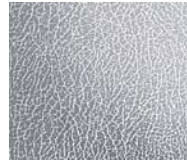
Anodised aluminium



Mirror-polished stainless steel



Ground stainless steel



Stainless steel skin



Stainless steel patch



Feather-finish stainless steel



Powder-coated (see Runtal colour chart)



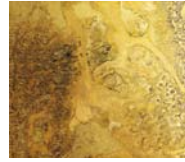
Satin black stainless steel



Satin bronze-coloured stainless steel



Etched copper



Etched brass



Other finishes, see price list

## RUNTAL ARTEPLANO SATIN (Actual finishes may vary slightly from those shown)



Powder-coated (see Runtal colour chart)



Anodised aluminium



Ground stainless steel

## RUNTAL ARTEPLANO ONDA (Actual finishes may vary slightly from those shown)



Powder-coated (see Runtal colour chart)



Anodised aluminium



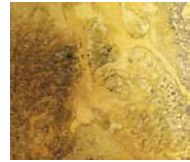
Ground stainless steel



Feather-finish stainless steel



Etched copper



Etched brass

## COLOURS (Actual colours may vary slightly from those shown)

- 0603
- 0605
- 0692
- 0800
- 0567
- 0685
- 0754
- 0730

- 0780
- 0572
- 0695
- 0784
- 0801
- 0802
- 0733
- 0729

- 0731
- 0539
- 0726
- 0757
- 0728
- 0813
- 0535
- 0815

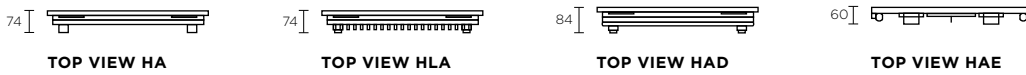
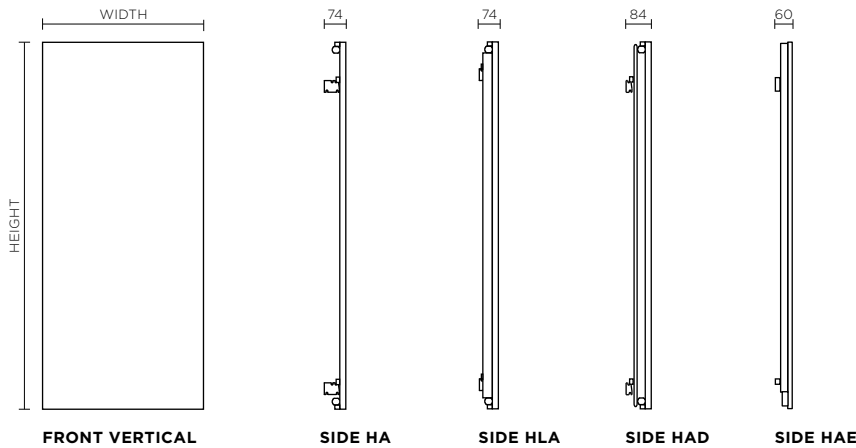
- 0740
- 0738
- 0666
- 0741
- 0522
- 0523
- 0529
- 0528

- 0526
- 0527
- 0524
- 0525
- 0542
- 0530
- 0543
- 0536

- 0541
- 0891
- 0846
- 0849
- 0847
- 0852
- 0853
- 0851

- 0848
- 0850
- 0806
- 0835

# RUNTAL ARTEPLANO TECHNICAL SPECIFICATIONS

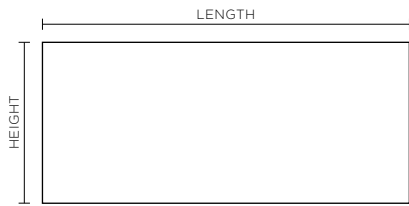


## PRODUCT DESCRIPTION

The heat panel RUNTAL ARTEPLANO is available in many variations, all offering efficient performance. Mounted on a base structure comprising a flat oval tube, profile header or sheet steel fins, the smooth front panel functions as a fast-acting heating surface. The radiator is designed to be connected to the hot water central heating system. The model HAE is available electric only with a programmable control unit. With vertical and horizontal models, flexible connections on the sides and in the centre for wall or floor installation, and a whole range of special dimensions, the radiator can be tailored to your room. Available in the full range of colours in the Runtal colour chart. Optionally available with exclusive special materials and surface finishes. The radiator is complemented by a range of accessories, designer valves and thermostats.

## TECHNICAL DATA

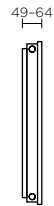
Name	VA (horizontal, simple) VLA (horizontal, with fins) VAD (horizontal, double) HA (vertical, simple) HLA (vertical, with fins) HAD (vertical, double) HAE (electric only, vertical, simple)
Height	See price list HAE 1945 mm
Width/Length	See price list HAE 413/513/613 mm
Connections	For central heating, various connections according to price list
Valves	See Accessories price list
Colour	Powder-coated steel front panel, available in all colours in the Runtal colour chart and in the surface finishes listed
Heat output	See price list HAE 750/900/1000/1250/1500 W
Standard	<b>CE</b>



**FRONT HORIZONTAL**



**SIDE VA**



**SIDE VLA**



**SIDE VAD**



**TOP VIEW VA**



**TOP VIEW VAD**



**TOP VIEW VLA**

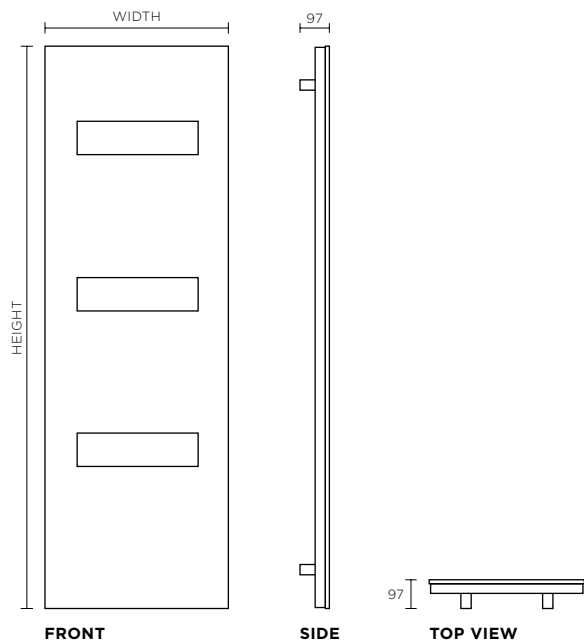


**TOWEL RAIL FOR VERTICAL MODELS (OPTIONAL)**



**PROGRAMMABLE CONTROL UNIT FOR HAE**

# RUNTAL ARTEPLANO SATIN TECHNICAL SPECIFICATIONS



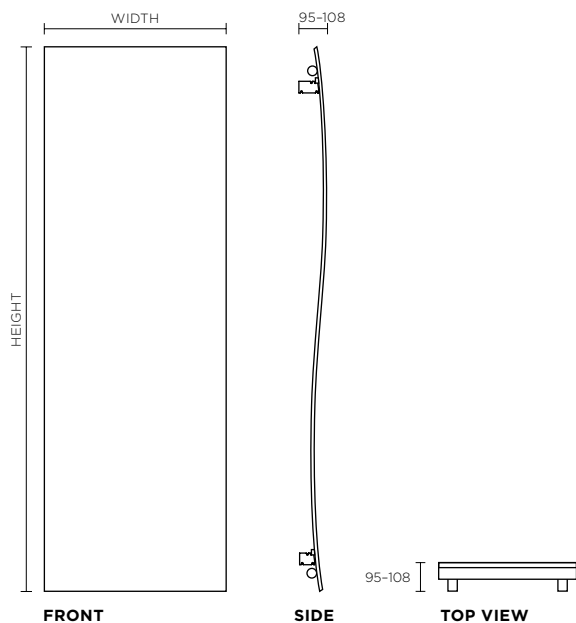
## PRODUCT DESCRIPTION

RUNTAL ARTEPLANO SATIN was specially developed for bathrooms and kitchens. RUNTAL ARTEPLANO SATIN features handy apertures for towels or dishcloths that complement the overall clean line. Designed for vertical installation and with various dimensions depending on requirements, with two or three apertures. The powder-coated steel structure can be finished in any colour in the Runtal colour chart. Also available with aluminium and stainless steel finishes. RUNTAL ARTEPLANO SATIN is available in different models for central heating system or electric operation.

## TECHNICAL DATA

Name	VC/VCE
Height	See price list
Width	See price list
Connections	For central heating, various connections according to price list
Valves	See Accessories price list
Colour	Powder-coated steel front panel, available in all colours in the Runtal colour chart and in the surface finishes listed
Heat output	533-797 W 500-1250 W (electric only)
Standard	<b>CE</b>

# RUNTAL ARTEPLANO ONDA TECHNICAL SPECIFICATIONS



## PRODUCT DESCRIPTION

RUNTAL ARTEPLANO ONDA is an elegant, subtly curved variation on the minimalist design of RUNTAL ARTEPLANO. From the front the radiator appears flat, but viewed from the side it reveals its wave-like form. The unusual design is available as a vertical model with various dimensions and connections to the central heating. Available in powder-coated steel, in any colour in the Runtal colour chart, or with panels of aluminium, stainless steel, brass or copper.

## TECHNICAL DATA

Name	HB
Height	See price list
Width	See price list
Connections	For central heating, various connections according to price list
Valves	See Accessories price list
Colour	Powder-coated steel front panel, available in all colours in the Runtal colour chart and in the surface finishes listed
Heat output Standard	473-1530 W



**ZEHNDER GROUP INTERNATIONAL SALES**

Almweg 34, D-77933 Lahr

T +49 78 21 586-392, F +49 78 21 586-406

[international.sales@zehndergroup.com](mailto:international.sales@zehndergroup.com)

[www.runtal.com](http://www.runtal.com)

A member company of the Zehnder Group.

**runtal**